

# CIR-BS4IKGC

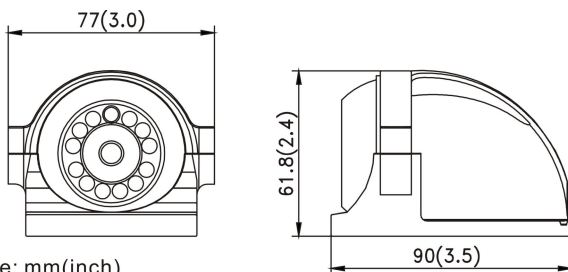
## 2 MP AHD Camera



### FEATURES

- 1/3" 2M Progressive Scan CMOS
- support four video signal output(1080P AHD /1080P TVI / 1080P CVI / CVBS), default video output is AHD
- 12PCs IR LEDs, IR Range: 10M(outdoor)
- 2.8mm IR Lens
- Feature: DWDR, 3DNR/2DNR, UTC, OSD, MIRROR, BLC, AWB

### DIMENSION



SPECIFICATIONS	
<b>CIR-BS4IKGC</b>	
IP Rating	IP67
Filter	Removable IR Cut Filter
Image Sensor	1/3" 2M Progressive Scan CMOS
Pixels	1920(H)×1080(V)
Horizontal Resolution	2MP
Minimum Lux	0Lux(12 Pieces IR LED ON)
Vertical Frequency	NTSC:60Hz PAL:50Hz
Scanning System	Progressive
S/N Ratio	≥52dB
Lens	2.8mm IR Lens
White Balance	ATW/MWB
FLIP	OFF/ON
MIRROR	OFF/ON
OSD	YES
3DNR /2DNR	AUTO/MANUAL
DWDR	OFF/ON
Day&Night	AUTO/Color/BW/Ext
Available IR Distance	10M
Video Output	HD-AHD ( TVI / CVI / CVBS )
Power Supply	DC12V±10%
Current consumption	180mA (MAX)
Dimension	90×77×61.8mm
Weight	370g
Storage Temperature	-30 ~ +60°C
Operating Temperature	-30 ~ +40°C